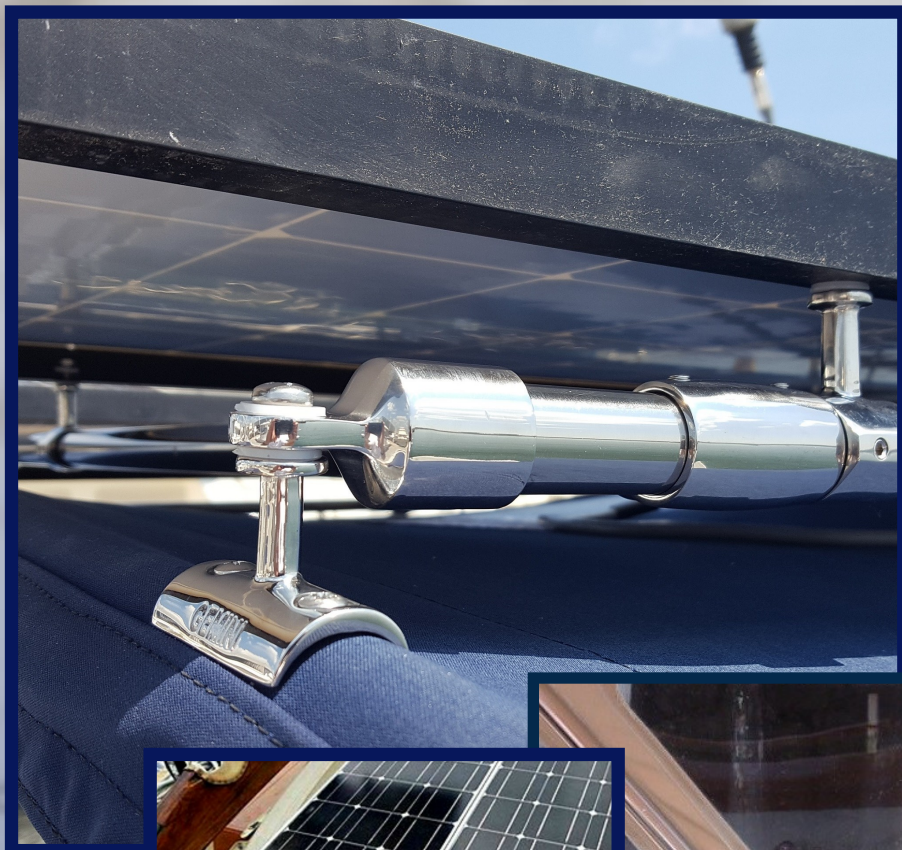




# GEMINI MARINE PRODUCTS

*Innovative marine-grade stainless steel  
boat hardware*



50 Tillson Avenue, Rockland, ME 04841 USA  
+1 (207) 596 7705 | US toll free (855) 596 7705 | [info@geminiproducs.net](mailto:info@geminiproducs.net)  
[geminiproducs.net](http://geminiproducs.net)



Improving on what has gone before

*Serving Midcoast Maine and beyond  
for 25 years*





# Table of contents

## Gemini Marine Products

|                                   |   |
|-----------------------------------|---|
| Concave fork and post mounts      | 2 |
| Folding struts                    | 3 |
| Hinges                            | 4 |
| Sliding and split jaw side mounts | 5 |
| DrillSteady                       | 6 |

## Stainless steel supporting hardware

|                          |   |
|--------------------------|---|
| Stainless tubing sleeves | 6 |
| Eye ends                 | 7 |
| Slip tees                | 7 |
| Spring balls             | 7 |

## Product details and specifications 8

For ordering information, please see inside back cover.

# Gemini concave mounts



Our concave mounts were developed to mount solar panels on dodgers and biminis, where quick release pins and unusual alignment angles are the norm.

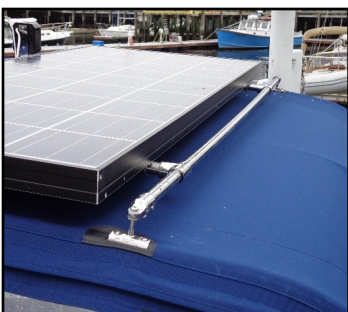
They are also great for mounting grab rails overhead under canvas.

## Concave post mounts

| Item #       | Description                             | Our retail price |
|--------------|---|------------------|
| GEMCON-78-P  | Concave post mount for 7/8" SS tubing   | \$19.95          |
| GEMCON-1-P   | Concave post mount for 1" SS tubing     | \$19.95          |
| GEMCON-125-P | Concave post mount for 1 1/4" SS tubing | \$21.75          |

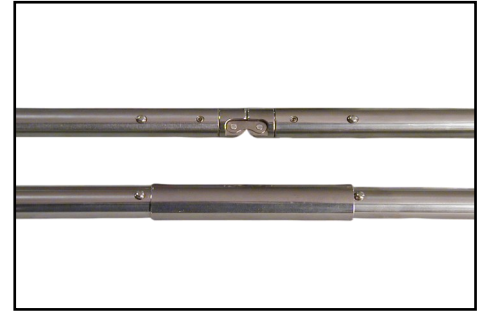
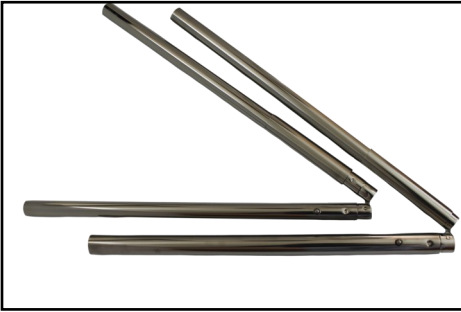
## Concave fork mounts

| Item #      | Description                           | Our retail price |
|-------------|---------------------------------------|------------------|
| GEMCON-78-F | Concave fork mount for 7/8" SS tubing | \$19.95          |
| GEMCON-1-F  | Concave fork mount for 1" SS tubing   | \$19.95          |





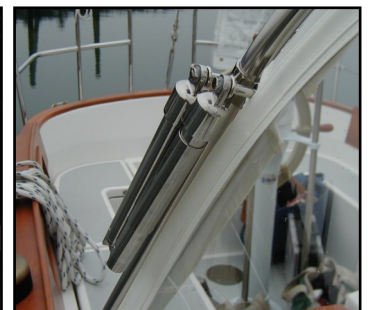
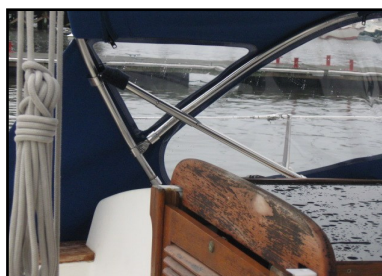
# Gemlock folding struts



Our patented Gemlock folding strut creates ocean-rugged rigid frame supports that eliminate tensioning straps.

Quick to deploy and a dream to store, they give your boat cleaner lines for a more elegant look plus better deck and cockpit access. Once locked in place the hinges fold only when you want them to fold, making them perfect for grab rails.

| Item #    | Description                       | Our retail price |
|-----------|-----------------------------------|------------------|
| GEMFS78-3 | 7/8" x 3' assembled folding strut | \$79.95          |
| GEMFS78-6 | 7/8" x 6' assembled folding strut | \$109.95         |
| GEMFS1-3  | 1" x 3' assembled folding strut   | \$85.95          |
| GEMFS1-6  | 1" x 6' assembled folding strut   | \$115.95         |



# Gemini hinges



Yes you *can* fold tubing - just use our patented Gemini hinges.

| Stainless steel hinges |  |                  |
|------------------------|--|------------------|
| Item #                 | Description                                      | Our retail price |
| GEMSSH-78-065          | SS hinge for 7/8" .065" wall thickness SS tubing | \$27.50          |
| GEMSSH-1-065           | SS hinge for 1" .065" wall thickness SS tubing   | \$28.50          |

| ABS plastic hinges |  |                  |
|--------------------|--|------------------|
| Item #             | Description  | Our retail price |
| GEMABSH-78049SS    | ABS hinge for 7/8" .049" wall thickness SS tubing              | \$16.50          |
| GEMABSH-78058AL    | ABS hinge for 7/8" .058" wall thickness <i>aluminum</i> tubing | \$16.50          |
| GEMABSH-78065SS    | ABS hinge for 7/8" .065 wall thickness SS tubing               | \$16.50          |
| GEMABSH-01065SS    | ABS hinge for 1" .065 wall thickness SS tubing                 | \$17.50          |



# Gemini sliding and split jaw side mounts



Our sliding side mounts provide the stand-off space with no drilling, making installation easy.

Our split jaw mounts can be mounted anywhere on an existing frame - even in the middle of a corner, bend or roof section - *without disassembly*.

| Sliding side mounts |                                      |                  |
|---------------------|--------------------------------------|------------------|
| Item #              | Description                          | Our retail price |
| GEMSL-78            | Sliding side mount for 7/8" tubing   | \$17.95          |
| GEMSL-1             | Sliding side mount for 1" tubing     | \$18.95          |
| GEMSL-125           | Sliding side mount for 1 1/4" tubing | \$21.95          |

| Split jaw mounts |                                   |                  |
|------------------|-----------------------------------|------------------|
| Item #           | Description                       | Our retail price |
| GEMSJ-78         | Split jaw mount for 7/8" tubing   | \$25.95          |
| GEMSJ-1          | Split jaw mount for 1" tubing     | \$27.95          |
| GEMSJ-125        | Split jaw mount for 1 1/4" tubing | \$28.95          |



# Tubing sleeves



Short lengths of US-made marine-grade 316 stainless steel tubing (.049 wall thickness) for new construction or repairs.

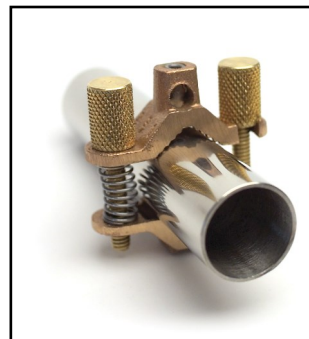
| Item #       | Description                        | Our retail price |
|--------------|------------------------------------|------------------|
| GEMSLV-78-5  | 5" sleeve to fit over 7/8" tubing  | \$9.95           |
| GEMSLV-1-5   | 5" sleeve to fit over 1" tubing    | \$9.95           |
| GEMSLV-78-10 | 10" sleeve to fit over 7/8" tubing | \$11.95          |
| GEMSLV-1-10  | 10" sleeve to fit over 1" tubing   | \$11.95          |

# Gemini DrillSteady

No slipping. No gouged tubing. Faster, more accurate drilling. Every time. Even on a moving boat.

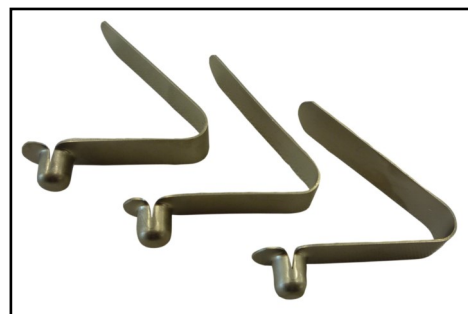
Our DrillSteady swings open to fit around installed tubing and radiused corners. Large knurled brass thumbscrews give a sure grip on tubing from 3/4" up to 1 1/4" diameter.

| Item #      | Description | Our retail price |
|-------------|-------------|------------------|
| GEM-DRLSTDY | DrillSteady | \$53.95          |





# Stainless steel supporting hardware



Stainless steel hardware to help you complete, convert or upgrade your installation.

## Eye ends, slip tees and spring balls

| Item #      | Description |                      | Our retail price |
|-------------|-------------|----------------------|------------------|
| GEMEYE-78   | 7/8"        | Eye end              | \$8.50           |
| GEMEYE-1    | 1"          | Eye end              | \$9.50           |
| GEMEYE-125H | 1-1/4"      | Eye end (heavy duty) | \$15.50          |

| Item #    | Description |                              | Our retail price |
|-----------|-------------|------------------------------|------------------|
| GEMTEE-78 | 7/8"        | Slip tee universal 90 degree | \$17.95          |
| GEMTEE-1  | 1"          | Slip tee universal 90 degree | \$19.95          |

| Item #    | Description |              | Our retail price |
|-----------|-------------|--------------|------------------|
| GEM-SPRBL | One Size    | Spring balls | \$2.95           |



# Product detail and specifications

All cast metal products are made with 316 stainless steel. Plastic hinges are made with acrylonitrile butadiene styrene (ABS) plastic, fiberglass reinforced, with a 316 stainless steel link.

## Sliding side and split jaw mount screw specifications\*

| Product            | Item #    | Tubing size US | Tubing size metric | Component                           | Component size                           |
|--------------------|-----------|----------------|--------------------|-------------------------------------|--|
| Sliding side mount | GEMSL-78  | 7/8"           | 22mm               | Post screw (incl 2 x nylon washers) | M6x1.0 thread<br>20mm length             |
|                    | GEMSL-1   | 1"             | 25mm               | Post screw (incl 2 x nylon washers) | M6x1.0 thread<br>20mm length             |
|                    | GEMSL-125 | 1 1/4"         | 3.15mm             | Post screw (incl 2 x nylon washers) | M8x1.25 thread<br>20mm length            |
| Split jaw mount    | GEMSJ-78  | 7/8"           | 22mm               | Post screw (incl 2 x nylon washers) | M6x1.0 thread<br>20mm length             |
|                    |           |                |                    | Clamp screw/nut                     | M6x1.0 thread<br>20mm hex head cap screw |
|                    | GEMSJ-1   | 1"             | 25mm               | Post screw (incl 2 x nylon washers) | M6x1.0 thread<br>20mm length             |
|                    |           |                |                    | Clamp screw/nut                     | M6x1.0 thread<br>20mm hex head cap screw |
|                    | GEMSJ-125 | 1 1/4"         | 3.15mm             | Post screw (incl 2 x nylon washers) | M8x1.25 thread<br>20mm length            |
|                    |           |                |                    | Clamp screw/nut                     | M6x1.0 thread<br>22mm hex head cap screw |

\*Screws are manufactured in metric

## Hinge specifications

| Item #          | OD standard | OD metric* | Insert diameter standard wall thickness | Insert diameter metric equivalent |
|-----------------|-------------|------------|---|-----------------------------------|
| GEMSSH-78-065SS | 7/8"        | 22mm       | .065" stainless steel                   | 18.75mm                           |
| GEMSSH-1-065SS  | 1"          | 25mm       | .065" stainless steel                   | 21.75mm                           |
| GEMABSH-        | 7/8"        | 22mm       | .049" stainless steel                   | 18.6mm                            |
| GEMABSH-        | 7/8"        | 22mm       | .058" aluminum                          | 19mm                              |
| GEMABSH-        | 7/8"        | 22mm       | .065" stainless steel                   | 19.3mm                            |
| GEMABSH-        | 1"          | 25mm       | .065" stainless steel                   | 21.8mm                            |

For the best prices, we encourage you to order from our distributors:

## **Retail customers USA**

---

### **Ahoy Captain**

+1 (908) 464 5581 [ahoycaptain.com](http://ahoycaptain.com)

### **Canvas Innovations**

+1 (616) 393 4400 [canvasinnovations.us](http://canvasinnovations.us)

### **Defender**

+1 (800) 628 8225 [defender.com](http://defender.com)

### **Downwind Marine**

+1 (619) 225 9411 [downwindmarine.com](http://downwindmarine.com)

### **E-Marine Systems**

+1 (954) 581 2505 [emarineinc.com](http://emarineinc.com)

### **Hamilton Ferris**

+1 (508) 743 9901 [hamiltonferris.com](http://hamiltonferris.com)

### **Hamilton Marine**

+1 (800) 639 2715 [hamiltonmarine.com](http://hamiltonmarine.com)

### **In Canvas**

+1 (425) 355 4102 [incanvas.com](http://incanvas.com)

### **Marine Customs Unlimited**

+1 (772) 223 8005 [marinecustoms.com](http://marinecustoms.com)

### **Sailrite**

+1 (800) 348 2769 [sailrite.com](http://sailrite.com)

## **Wholesale and fabricators**

---

### **Bainbridge International**

+1 (781) 821 2600 [bainbridgeint.com](http://bainbridgeint.com)

### **Manart-Hirsch**

+1 (800) 626 2781 [manart-hirsch.com](http://manart-hirsch.com)

### **Trivantage**

+1 (800) 786 1876 [trivantage.com](http://trivantage.com)

## **International customers**

---

### **J. Ennis Fabrics**

+1 (800) 663 6647 [jennisfabrics.com](http://jennisfabrics.com)

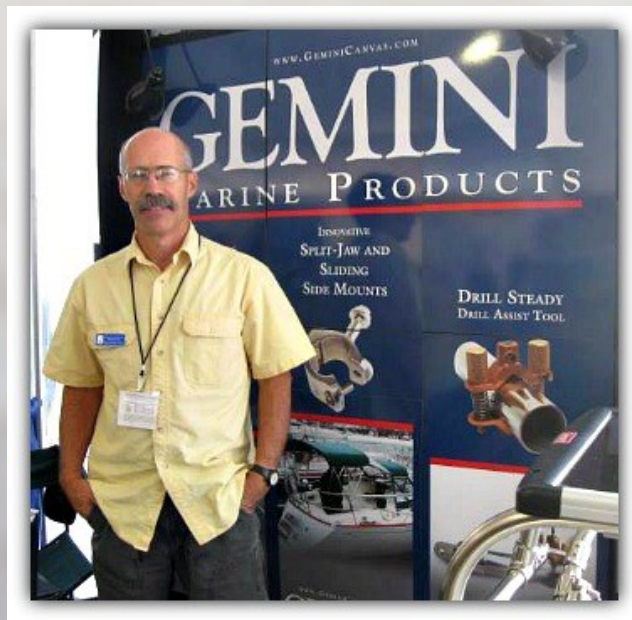
### **KayoSpruce**

+44 (0)1489 581 696 [kayospruce.com](http://kayospruce.com)

You can also order direct from us online via [geminiproducts.net](http://geminiproducts.net) or by telephone. All prices in US dollars and are subject to change without notice.

*If you are interested in becoming a distributor, please contact us for information and products samples. We'd love to hear from you.*





John LeMole, owner of Gemini Marine Canvas and Marine Products, has been designing and sewing marine canvas and upholstery for 25 years. The Industrial Fabrics Association International (IFAI) awarded him Master Fabric Craftsman status in 1999, and he has a string of IFAI Marine Fabricators Association design and quality awards to his credit.

This experience led him to design, develop and patent the Gemini hinge and Gemlock folding strut (see pages 3 and 4) that make the strapless bimini, drop top dodger and folding pusher bars possible (see our website for details). He also developed concave and side mounts (see pages 1 and 5) that enable easy attachment of solar panels and accessories to marine canvas frames.

Gemini Marine Products emphasize high quality, flexibility and ease of use, making us a natural choice for professional fabricators and DIY enthusiasts alike. All Gemini marine hardware is extensively field tested by canvas shops, boat owners and retailers across the US and internationally.

Let's see what you can do.

